



PORTFOLIO

2020

Robert Ungar

architecture + urban + landscape

WE OWN IT

URBAN DESIGN FOR LOCAL OWNERSHIP

Urban design strategy for Oakland Community Land Trust (OakCLT).
How can neighbourhoods be renewed in a process that ensures long term sustainability and prosperity?

CLTs are non-profits enabling shared-equity ownership of land and homes in a self-governed structure. Locally grown neighbourhood renewal will enable an inclusive and impactful social structure. CLTs can sustain new kinds of urban design, as exemplified in East Oakland, California.

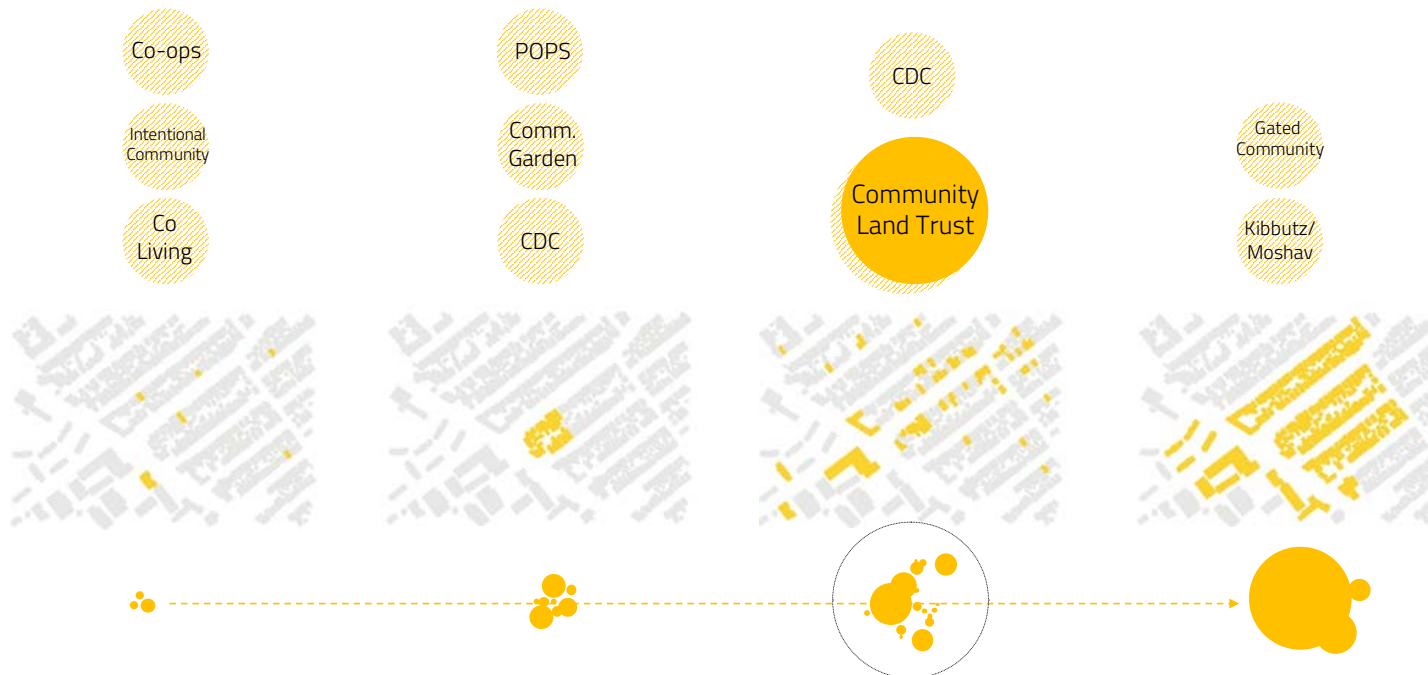
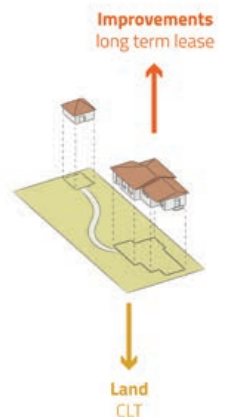
*2018. Conceptual.
UC Berkeley Master of Urban Design thesis project.*



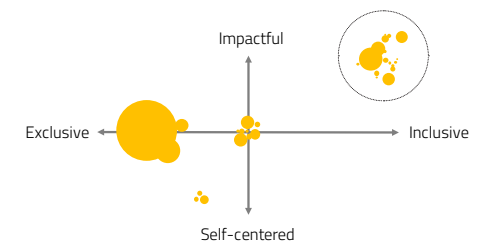
**OAK
CLT**

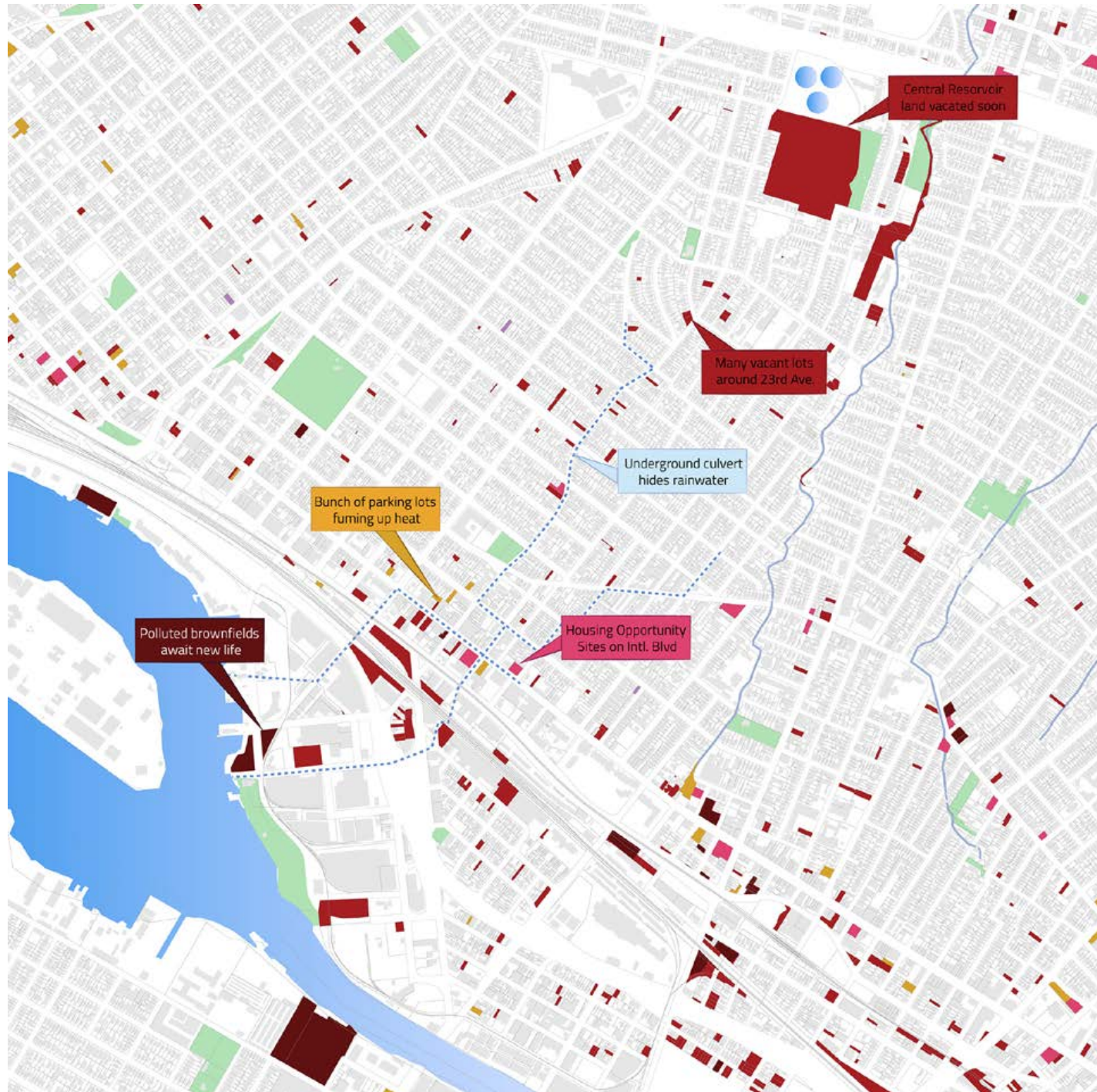
SOCIAL CHANGE VIA LAND OWNERSHIP

Steve, Zachary and Jen are behind OakCLT, one of the most innovative, bottom-up movements fighting gentrification and displacement in the San Francisco Bay Area.



Analysis of social urban forms






REGIONAL STRATEGY



 Capture investment without displacement



 Leverage climate adaptation to closing social gaps

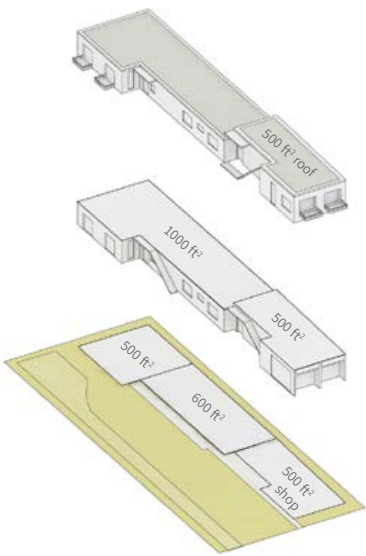
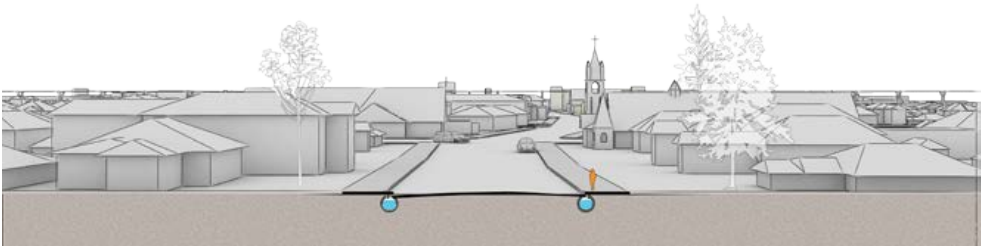


 Amplify local voices for sustainable partnerships

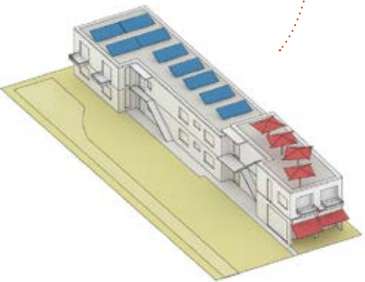


 Access to green transit

CLIMATE RESILIENT MIXED
INCOME STREET RENEWAL
IN EAST OAKLAND



CARBON-NEUTRAL
mixed income, mixed use
fourplex building type,
based on prefab modules.



**HUMAN SCALE ALLEYS FOR
COMMUNITY DEVELOPMENT**



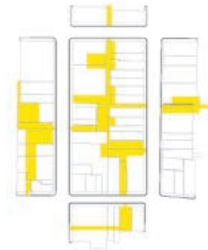
Typical block -
Today



Potential sites for
CLT Acquisition



Community owned
land and alleys



CLT development
scenario



ALTER ECO ENVIRONMENTAL DEVELOPMENT IN ALAMEDA

Redevelopment of a 1500 acre former naval airbase, mitigating soil pollution, sea level rise and earthquake risk. Dense, bottom-up urbanism based on eco-blocks and a closed-loop water system. Northern California's native marsh agriculture is restored as a resilient, climate-sensitive economic driver.

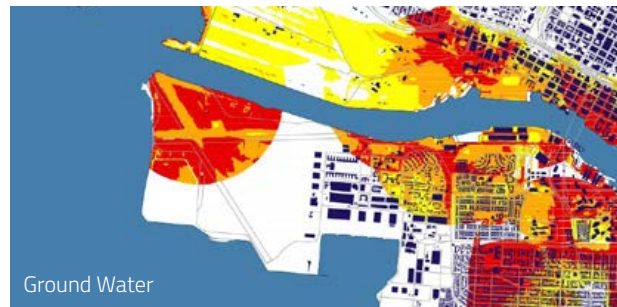
UC Berkeley Urban Design studio project,
within 'Resilient By Design Bay Area' framework

2017-2018. *Conceptual*

RISK MAPPING



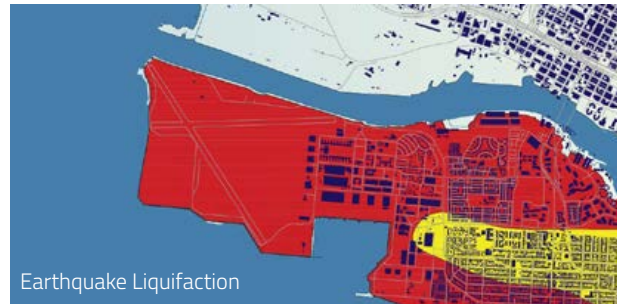
Source: Superfund Sites. U.S EPA 2015 Industry



Source: UC Berkeley Library



Source: Surging Seas



Source: USGS

Y0 - PHASE 1 ENVIRONMENTAL ADAPTATION STRATEGY



1 Exposing Contaminated Soil



2 Burying Contaminants
as Foundations



3 Reconfiguring Edges:
Rigid to Port, Soft to Bay



4 Cut & Fill horizontal levee,
adapting to Sea Level Rise



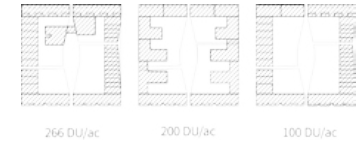
5 Connecting to San Francisco
and Oakland





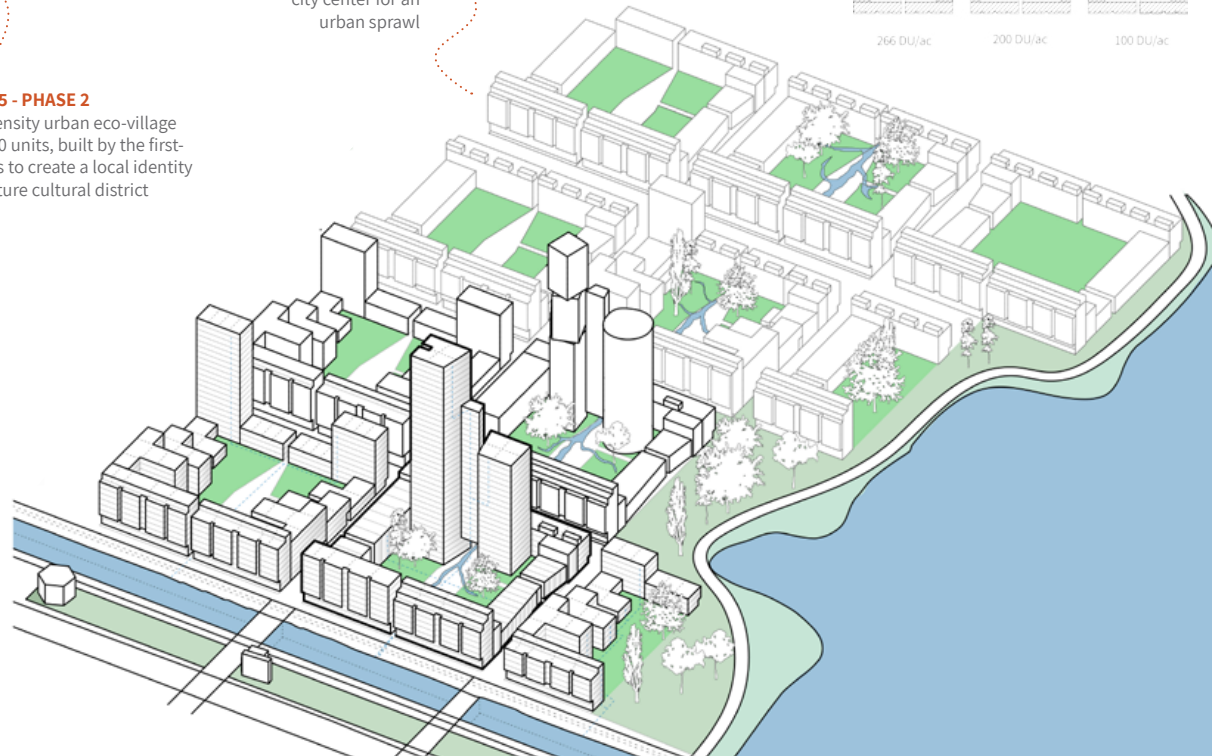
Y15 - Y35 - PHASE 3

Adding a high density center to Alameda - a new city center for an urban sprawl



Y1 - Y15 - PHASE 2

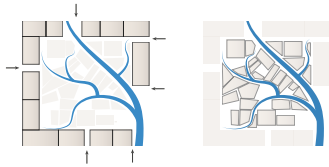
mid-density urban eco-village of 1,750 units, built by the first-comers to create a local identity and future cultural district



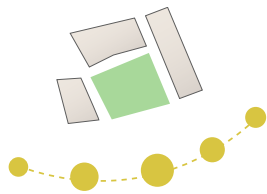
ZERO WATER / ENERGY / WASTE

Eco-village will be zero-net neighbourhood, producing its own solar and bio energy, collecting stormwater, grey-water and treated blackwater. Freshwater lake and open canals flow through fabric, hosting native wetland plants.

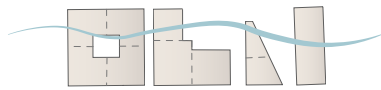




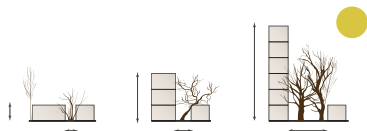
Orderly streetscape + Contained disorder



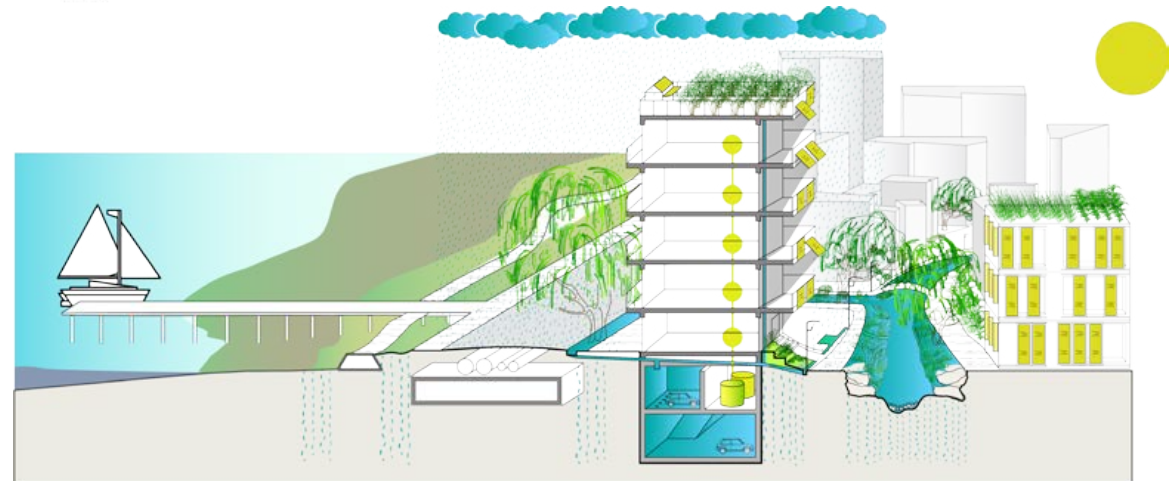
Sunny pocket gardens



Cross ventilation in units



Regulated alley width / building height ratio
max. 6 stories out, max. 3 stories in



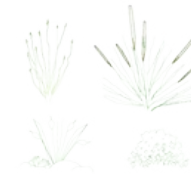
- Black Water
- Grey/Storm Water
- PV Panel



Native Oysters
Olympia



Salt Marsh Edibles
Salicornia, seaweeds



Fresh Marsh Edibles
wild rice, spinach,
celery, typha



Rooftop Agriculture
vegetables, greens

YAD HARUTZIM 14, JERUSALEM CO-DESIGN IN AN INDUSTRIAL ZONE

Collaborative ideation and design process with business owners resulted in a street corner offering shade, water and beneficial botanics for passers-by. Talpiot is an arid, vehicle-scale industrial area transforming from small-scale production to a retail and office district, and public space is adapting.

Public engagement, design & management, with ONYA Collective.
for Eden, Jerusalem Development Co.
+ Business Association + New Spirit
Organization for Jerusalem Communities.

2017. Completed. \$120,000



SHADING STRUCTURE follows historic contour of full-grown tree. **CUSTOM SEATING** made of recycled pressed car tires, **WATER FOUNTAIN** and anti-vandal **MIRROR** for a small wash, and **BENEFICIAL PLANTS** like Sansevieria, Lime tree, and Aloe Vera, balance damage caused by air pollution and strong sun.





தமிழக அரசு



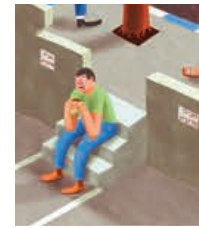
புகை அபாய சிகை



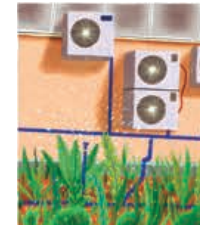
ବର୍ତ୍ତମାନ



ישיבת הרבנים חתום ומוסר



ମଧ୍ୟମ ଶ୍ରେଣୀ



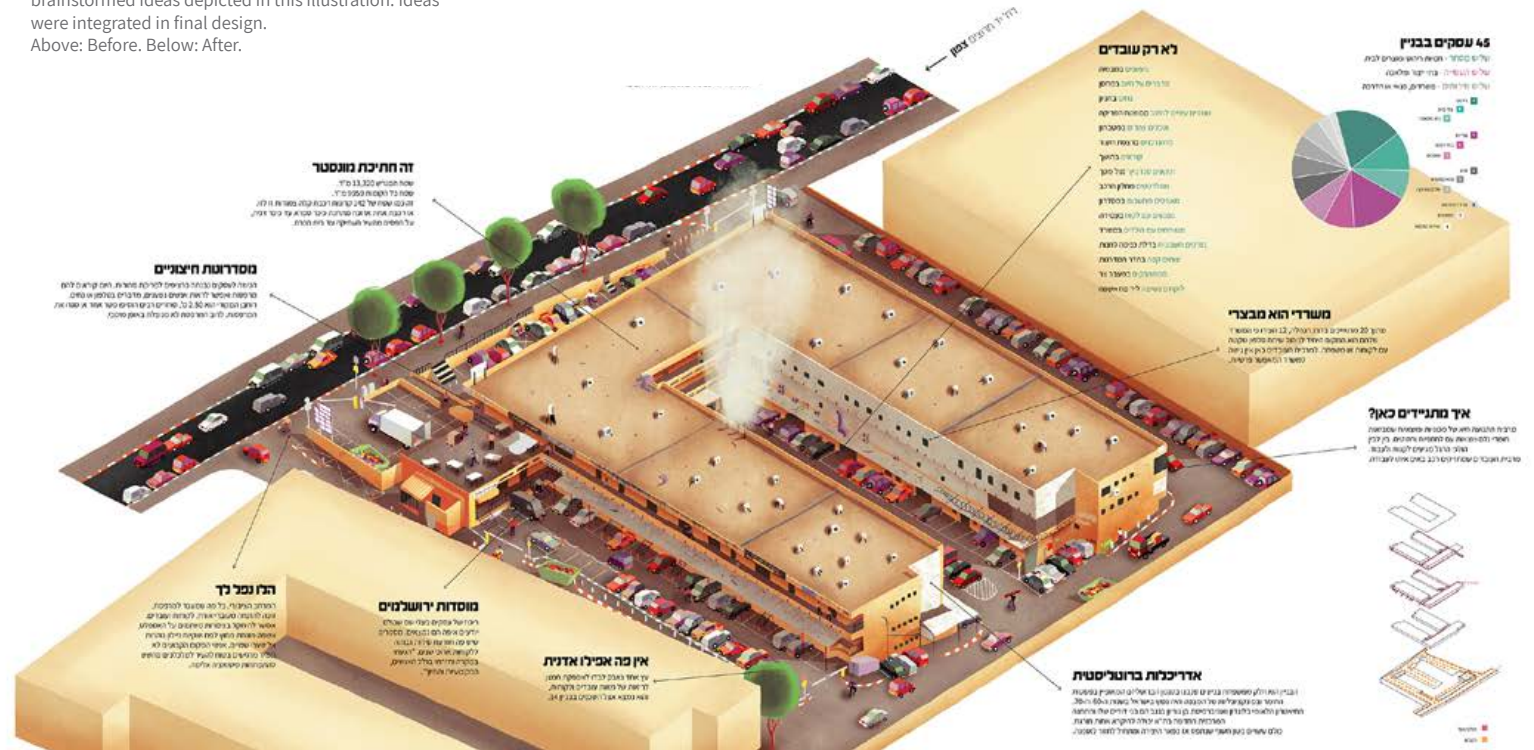
ገጽ ፩



משפחה נ'א

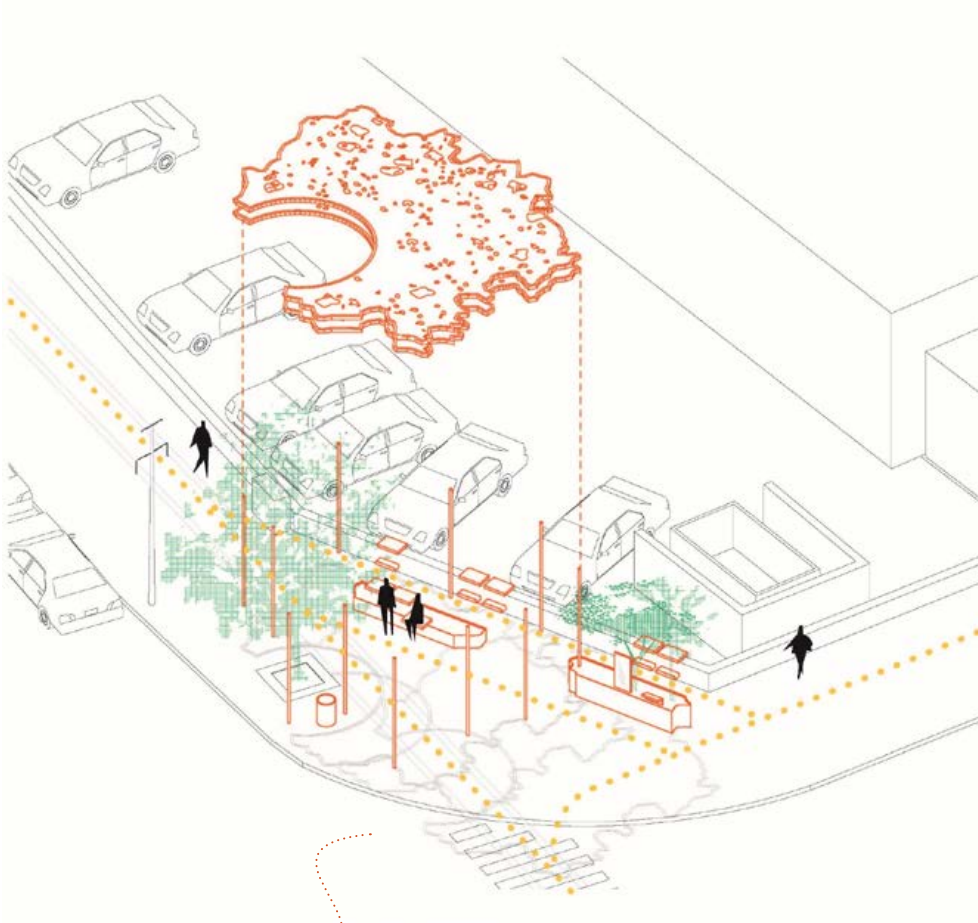
PARTICIPATION WAS KEY TO THE GETTING IT RIGHT.

30 business owners participated in personal interviews and round table brainstorming sessions. Each table discussed a subject rising from previous interviews and brainstormed ideas depicted in this illustration. Ideas were integrated in final design.
Above: Before. Below: After.



Corner triangle is a **REMNANT SPACE** added to the public realm from adjacent privately owned lots but never utilised for public use.

we found an ill tree, midged under an electric line. The tree is devoid of growth due to **AGGRESSIVE PRUNING** by the electric company.



SPATIAL ARRANGEMENT was planned to complement people's movement patterns in the corner, putting to use the extra space to enable cozy resting and relaxation.





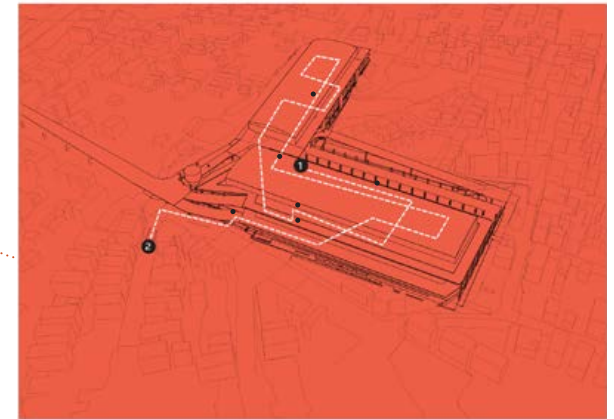
NEXT STATION - ECOLOGICAL INTERVENTIONS IN A BUS STATION

Series of interventions in and around Tel-Aviv-Yafo's monstrous central bus station, seeking to present innovative ways to connect cityscape and nature. Placemaking, urban farming, guerilla gardening and eco-artistic projects aimed to create public awareness to the ecological and social values in the building's untapped potential.

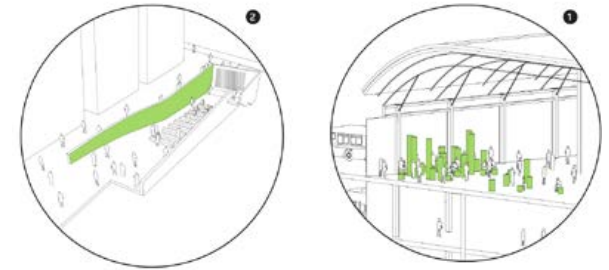
Curation, production and management. with ONYA Collective and hundreds of volunteers, artists and sponsors. part of 'WorldWide Storefront' exhibition by Storefront for Art & Architecture, NYC

2014. completed . \$1,000 + sponsorships + alot of good will

1,500 people arrived to the opening event, and tens of thousands of commuters met the living installations over two months. 3 Major interventions still remain, maintained monthly by ONYA volunteers.



Top left to bottom right:
1 air purifying plants on bridge column
2 upcycled vertical mini-farm
3 free bus terminal library in 12 languages
4 green roof on retired bus
5 multi-community garden
6 hydroponic indoor farm
7 celebrating leaf harvest
8 vertical vegi-bench, built from scraps and reusing waste water



URBAN SHADE

Winning prototype in an international competition for large scale shading structure. The design is a simple and happy take-off on available materials of steel and fabric, defining a useful space for people under the harsh mediterranean sun.

Local architect, with Point Supreme Architects, Greece
'Urban Shade' competition and exhibition, Holon Design Museum, Beracha Foundation, Holon municipality.

2015 . built, \$30,000

Old and new public parks and streets in Israel are planned without regard to the issue of shade. Socially disadvantaged are the ones to most suffer, forced to spend summer afternoons in poorly insulated small apartments or air conditioned shopping malls.

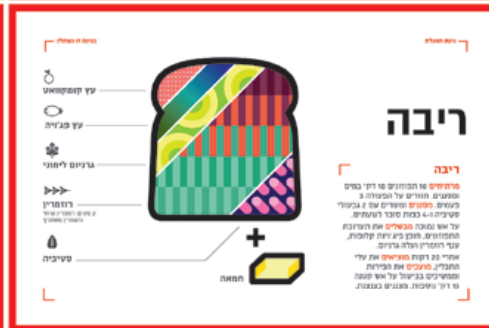
Jaffa slope park, inaugurated 2010



with ONYA Collective and Roni Levit
Graphic Design, part of 'Seed City' project
for Ramat-Gan municipality.

2016. completed

A diagram showing a projectile's path. A solid orange dot at the top left represents the starting point on a cliff edge. A dashed orange arc represents the path of the projectile, which follows a parabolic trajectory, reaching a peak and then falling down to the right.



SOUTH TEL-AVIV COMMUNITY FOOD FOREST

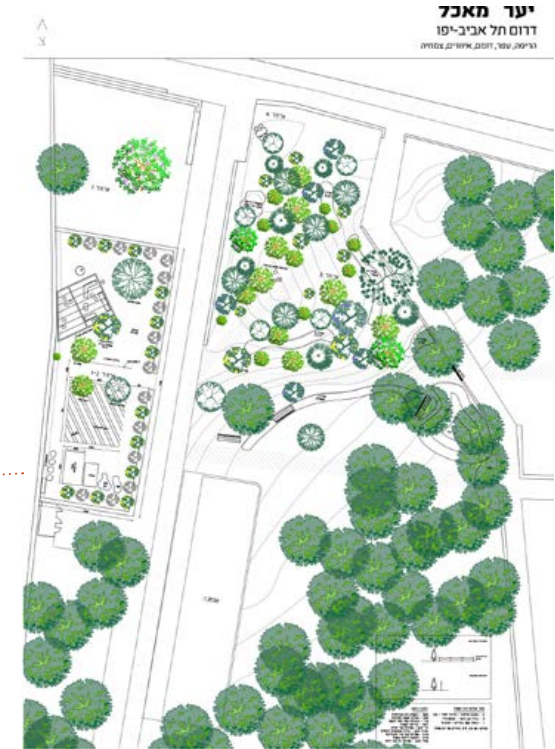
Collaborative planning of a community-managed, low maintenance, water conserving agro-forestry system, fit for a Mediterranean climate zone.

Landscape architecture and co-design as community member.
with Green Trend (Megama Yeruka)
organization for environmental activism,
backed by Tel-Aviv-Yafo municipality.

2016-2018. planted and growing. volunteer project

30 people of all ages
participated in planning
exercises, deciding upon tree
types, furniture and signage.

Local types of olives, citrus,
figs, berries, pomegranates,
sambuk, cacti, papayas and
moringa trees will introduce
climate compatible species in
plant companionship setting.
Currently, the park is planted
with pines imported from
Europe, detaching cultural
relations and risking lives in
case of wildfires.





Teaching, content curation and editing,
Bezalel Dept. of Architecture, Civic
Architecture studio + Bracha Foundation
and Beer Sheva Municipality
with Avigail Roubini Graphic Design

"Every ring formed has turned white,
turning food items for a poorer lot; it sold
like a peeper and tomorrow showing in
Dakar, where one gets the cross and the
other gets the halo."

Maxine Perle
Translated from "The Song of the Cat"



MIGRATION GROVE ALBANY BULB, CA

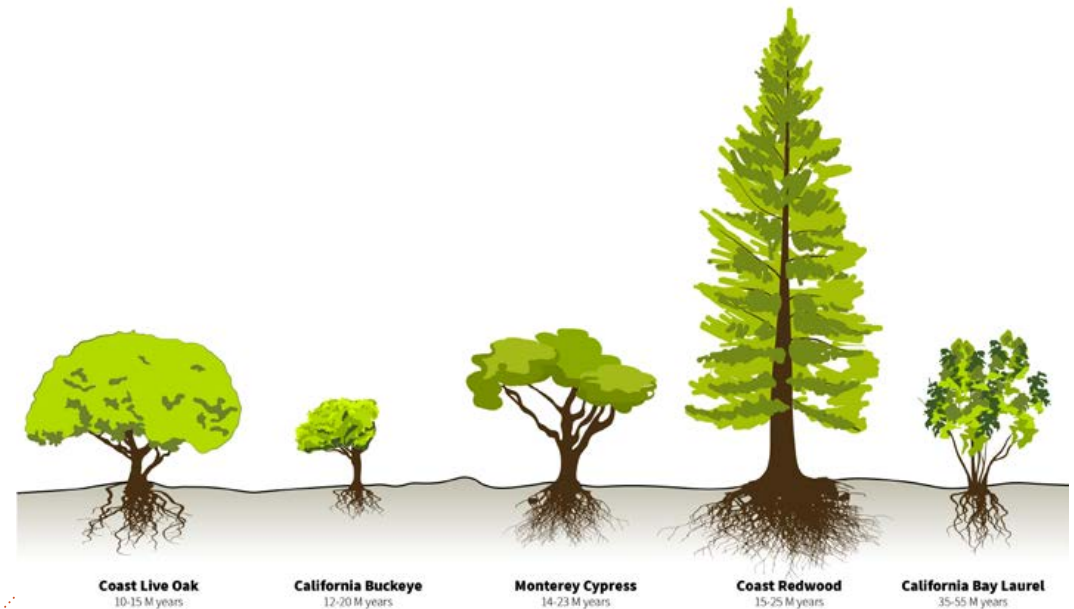
Where are you native to? Even trees we consider native migrated here in different times. With changing social and environmental climates, this grove of five California trees planted at Albany Bulb landfill art part, tells a story of a local habitat, in preparation for future natives.

Guerilla planting.

2019. Completed. Volunteer project.

Albany Bulb is a former construction waste landfill turned into informal public art park since dumping stopped in the 1980's.

The selected native trees provides food, shade and nesting space for a diversity of species including humans.



ALL AND EVERY GRASS SOCIAL ART IN THE SCIENCE MUSEUM

Multi-community garden and series of educational events, presenting 8 diverse communities in Jerusalem involved in sustainability. Like plant guilds, Palestinian gypsies, secular Israelis, Orthodox Jews and neo-hippy communities are seemingly separate and even conflicted above ground, but actually connected at the roots.

Part of Agropolis, artistic interventions in a scientific agriculture exhibition.
Jerusalem Science Museum

2016. ongoing, \$7,000 and locally grown crops

Each community received one planter and plants with cultural importance, sharing its story and symbolism. Event content was built by the groups, thus creating discussion over what is common - nature and sustainability, rather than what is different - ethnic or political background.

